

# K&F CA 1515-6

- 2-way full-range loudspeaker system loaded with 15"/1.5"
- Passive crossover with time alignment correction
- Very precise coverage in horizontal and vertical axes, rotatable horn
- Multifunctional enclosure
- max. SPL 130 dB
- Optional operation with K&F SystemAmps



The CA 1515-6 is the logically consistent development of the successful CA series. This compact full-range high-power loudspeaker system provides a 15" LF-transducer, a 1.5" compression driver and a passive crossover network. Regardless to its small dimensions the especially developed 15" chassis gives the CA 1515 an impressive bass reproduction. The CA 1515 systems are suitable for any programme source and flexible in use, such as main system, center-speaker, side-, drum- and downfill or as stage monitor.

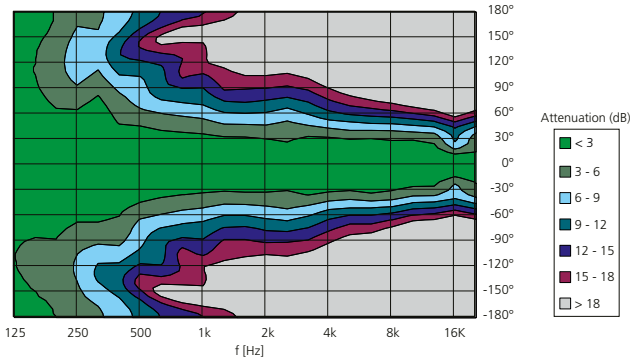
With a coverage of 65° x 50°, the CA 1515-6 is very suitable for nearfield applications as well as for middle and far distances. High maximum acoustic pressure, low feedback tendency, excellent speech intelligibility and a precise reproduction of music programme result from the extensive horn's outstanding directivity, the 1.5" driver's acoustic capability and the linear and phase coherent crossover network. This makes the sound of the CA 1515-6 extremely powerful, free of coloration and precise. As a stage monitor, this system bears comparison with professional wedges.

In addition, multiple innovative detail solutions make the CA 1515 system an allrounder with plug-and-play features, such as the asymmetric multi-angle enclosure, which provides acoustic advantages as well as multiple mounting-options: pole-mounted, flown in a cluster or single and as a floor wedge. Furthermore, „butterfly“-handles for easy transport, driver protection and a 90° rotatable horn to fit the directivity to multiple applications. Optionally, the result of the CA 1515-9 can be enhanced with the K&F SystemAmps.

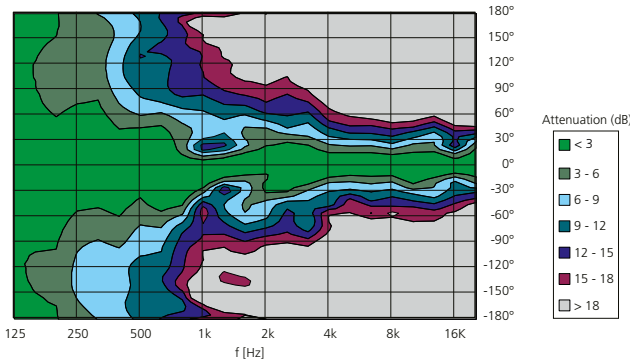
The professional user will be convinced of versatility, power capability and sound of the CA 1515 systems.

Loudspeaker	
Design	2-way passive system with bassreflex tuning
Operated with	K&F PLM+ Series, K&F D-Series, Lab. Gruppen IPD 2400, K&F SystemRack, K&F TOPAS, passive with linear amplifiers
Frequency range -10 dB	47 Hz – 22 kHz
Frequency range ±3 dB	77 Hz – 19 kHz
Coverage angles nominal	65° x 50° (hor. x vert.), CD-Horn rotatable
Power handling nominal	500 Watts
Power handling program	1.000 Watts
Power handling peak	2.000 Watts
Max. SPL	131 dB (SPL peak/1 m)
Impedance nominal	8 Ω
Loudspeaker per channel	see Matrix
Components	1.5" high frequency driver with 75 mm Titanium diaphragm, 15" low-mid chassis, 1.1 kHz 12 dB / octave, automatic resettable driver protection, passive allpass filter for time alignment and phase optimization
Connectors	2 x speakON® 4-pol NL4MP (+1/-1), IN parallel zu OUT
Enclosure	
	Multi-functional enclosure out of 15 mm multiplex with highly resistant structured paint (PU) in RAL 9005 (black), 55° monitor angle, cluster angle, 2 ergonomical butterfly handles, internale pole mount, 4 non-abrasive plastic sliders on monitor angle, 5 flying points 'allsafe JUNGFALK', ball-proof steel grill with exchangeable black acoustic foam
Dimensions (W x H x D)	434 x 680 x 411 mm
Weight	36.4 kg
Colour	RAL 9005 (black)
Options	'AS', axial symmetrical version, '100 V' version with 300 VA toroidal transformer (38.9 kg), 'barrier strip' instead of 'speakON®' connectors, 'Outdoor Mobile', 'Outdoor Installation', 'special finish in RAL colours'
Accessories	see Catalog or <a href="http://www.kling-freitag.com">www.kling-freitag.com</a>

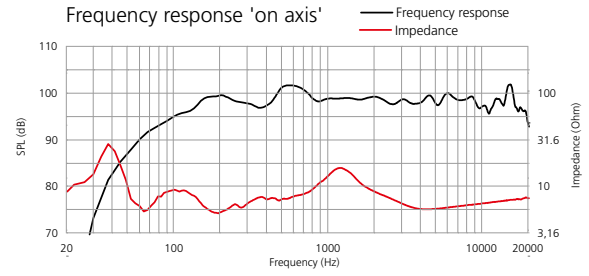
### Horizontal coverage pattern



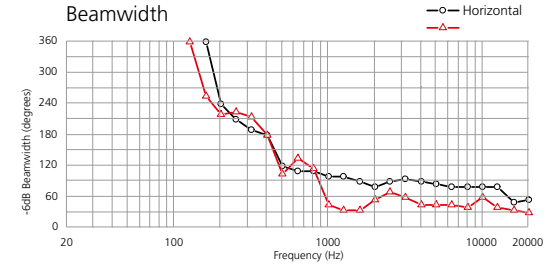
### Vertical coverage pattern



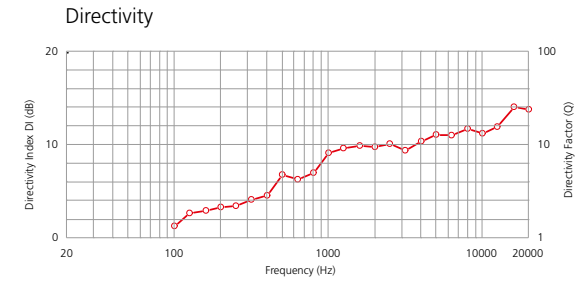
### Frequency response 'on axis'



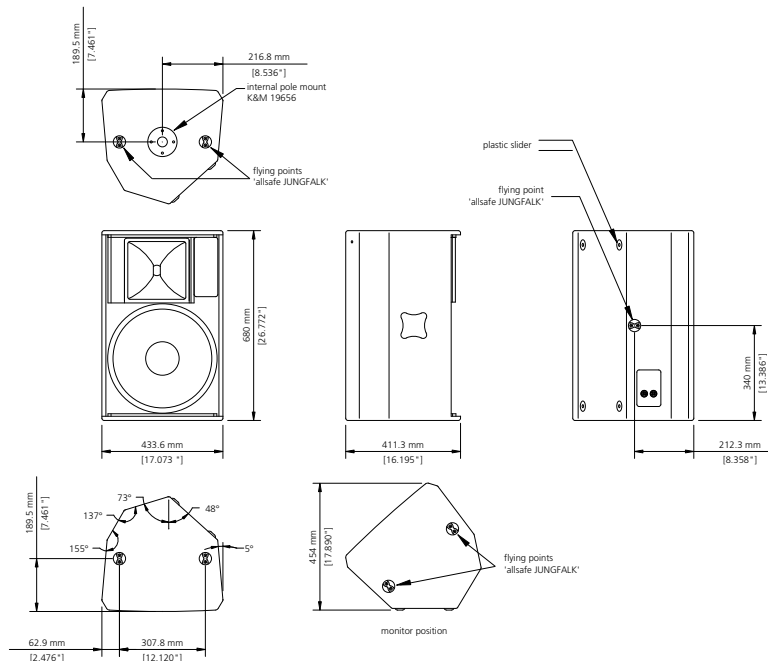
### Beamwidth



### Directivity



All measurements under free field conditions. Frequency patterns 1/6 octave averaged. Coverage and polar pattern 1/3 octave averaged. The manufacturer reserves the right to make product alterations to improve product quality without prior notice. Errors excepted.



Further information and data like specifications, manuals, technical drawings as DWG, DXF and PDF files as well as data files for acoustic simulations with Ease and Ulysses are available on our web site [www.kling-freitag.com](http://www.kling-freitag.com)

**KLING & FREITAG GmbH**  
Junkersstrasse 14  
D-30179 Hannover  
Tel. +49 (0)511 96 99 7-0  
Fax +49 (0)511 67 37 94