

K&F Line 212-9

- Compact, horn-loaded (2 x 12" / 1.5") full-range speaker
- Passive operations via integrated crossover with time alignment
- 90 x 50 degrees, rotatable high frequency horn
- FLC®-technology (frequency dependent line coupling / patent)
- 136 dB max. SPL
- Operations with the K&F SystemAmps
- Versatile use as single system and in arrays, applicable in combination with Line 212-9



The Line 212-9 has the patent FLC®-technology and along with the Line 212-6 (90° x 50°), it establishes a new generation of high-power systems with wideband controlled sound distribution and minimal dimensions.

The FLC® developed by Kling & Freitag provides for distinctive homogenous directivity from the low-mid up through the high range. In doing so, two of the same speaker chassis are acoustically linked to become a column speaker (line) and are controlled in-phase using the FLC® electronics in frequency bands with different widths. With the frequency selective addition of both 12" cones, a highly efficient acoustically optimised speaker unit is created by the Line 212. This is especially noticeable in the reproduction of low frequencies and efficiency and homogeneity of the omnidirectional sound distribution.

The Line 212-9 is suitable as a passive full range speaker especially for short and mid-range distances and fully compatible with the sister model Line 212-6. The top quality of the materials and design provide for maximum flexibility of use of this system: as mobile p.a. system or for fixed installations in theatres, arenas, or stadiums. Singular or combined in a cluster, horizontally or vertically placed on the stage, or flying; the multitude of possibilities is enormous. The certified and very easy to operate 'Click & Fly®' flying system makes a safe and quick set-up possible.

With 'Plug & Play', without any technical effort, the Line 212-9 achieves first-class acoustical results. The Line 212-9 is especially suited for use in a cluster and can even be combined with the Line 212-6. It is also superbly suited for decentralised systems, such as for electro-acoustical 'emergency warning systems' via audio matrix.

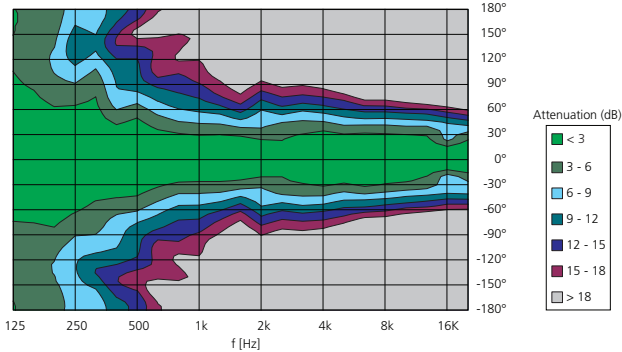
The use of the K&F SystemAmps guarantee optimal signal processing in the full-range mode

The Line 212 from Kling & Freitag is a standards in sound reinforcement technology because of the convincing advantages of the FLC®- and passive-technology, the full-range capabilities, and the resulting flexibility and performance.

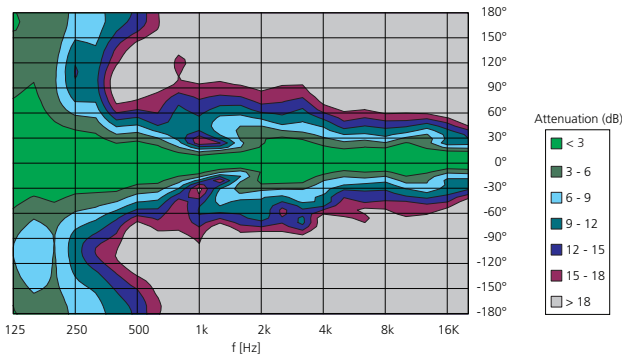
| K&F Line 212-9 | |
|---------------------------|--|
| Design | 2 + 1-way passiv system with FLC®-technology, completely horn loaded, bassreflex tuning |
| Operation with | K&F PLM+ Series, K&F D Series, K&F SystemRack ¹ , K&F TOPAS ¹ |
| Frequency response -10 dB | 49 Hz – 20 kHz 'FR Mode' 65 Hz – 20 kHz without controller |
| Frequency response ±3 dB | 60 Hz – 18 kHz 'FR Mode' 130 Hz – 20 kHz without controller |
| Coverage angles nominal | 90° x 50° (hor. x vert.), horn rotatable |
| Power handling nominal | 600 watts |
| Power handling program | 1,200 watts |
| Power handling peak | 2,400 watts |
| Max. SPL | 136 dB (SPL peak/1 m) |
| Impedance nominal | 6 Ω |
| Loudspeaker per channel | See matrix |
| Components | 1.5" high frequency driver with 75 mm Titanium diaphragm 12" low-mid chassis and 12" low chassis, booth with horn attachment |
| Connectors | 2 x speakON® 4-pol NLT4MP (+1/-1) IN parallel to OUT |
| Enclosure | |
| | Trapezoidal enclosure out of 15 mm multiplex with highly resistable structured paint (PU) in RAL 9005 (black), 2 butterfly handles, 4 non-abrasive plastic sliders, 4 stacking grooves for identical enclosures, 4 flying points 'allsafe JUNGFALK', 1 rear mounted flying track 'allsafe JUNGFALK', 2 locking profiles for optional transport cover with castors, ball-proof steel grill with exchangeable acoustic foam (black) in front of the grille |
| Dimensions (W x H x D) | 429 x 1025 x 510 mm |
| Weight | 57.5 kg |
| Colour | RAL 9005 (black) RAL special colour |
| Options | 'Installation' 'barrier strip' instead of speakon connectors, 'Outdoor Mobile', 'Outdoor Installation' |
| Accessories | See catalogue or www.kling-freitag.com |

¹ Discontinued in October 2015

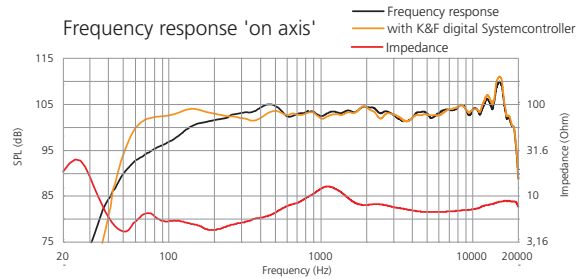
Horizontal coverage pattern



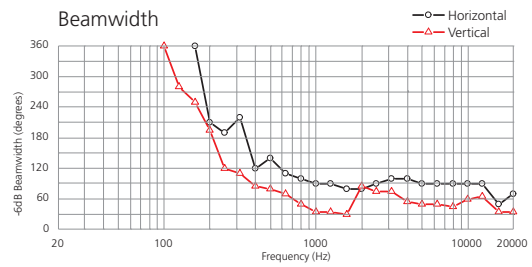
Vertical coverage pattern



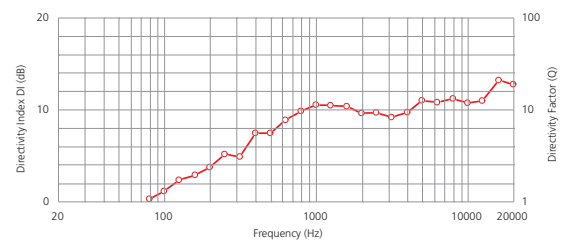
Frequency response 'on axis'



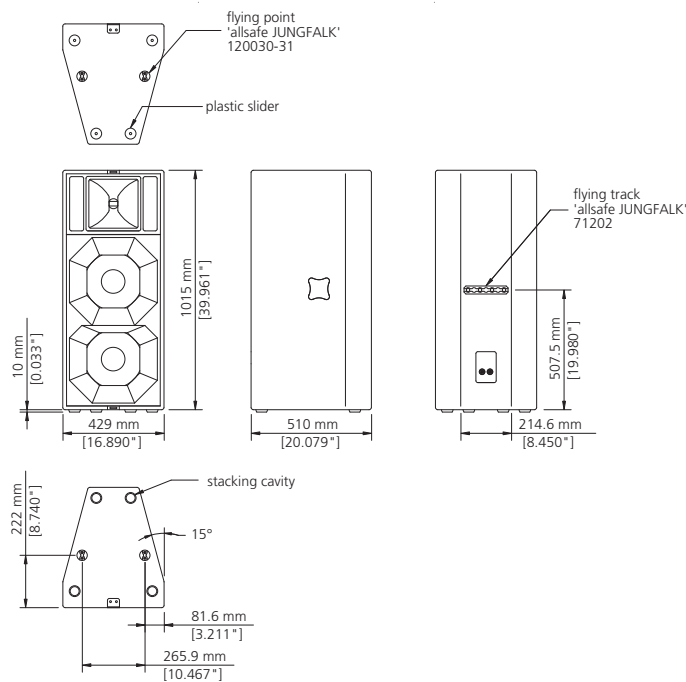
Beamwidth



Directivity



All measurements under free field conditions. Frequency patterns 1/6 octave averaged. Coverage and polar pattern 1/3 octave averaged. The manufacturer reserves the right to make product alterations to improve product quality without prior notice. Errors excepted.



Further information and data like specifications, manuals, technical drawings as DWG, DXF and PDF files as well as data files for acoustic simulations with Ease and Ulysses are available on our web site www.kling-freitag.de

KLING & FREITAG GmbH
Wohlenbergstr. 5
D-30179 Hannover
Tel. +49 (0)511 96 99 7-0
Fax +49 (0)511 96 99 7-97