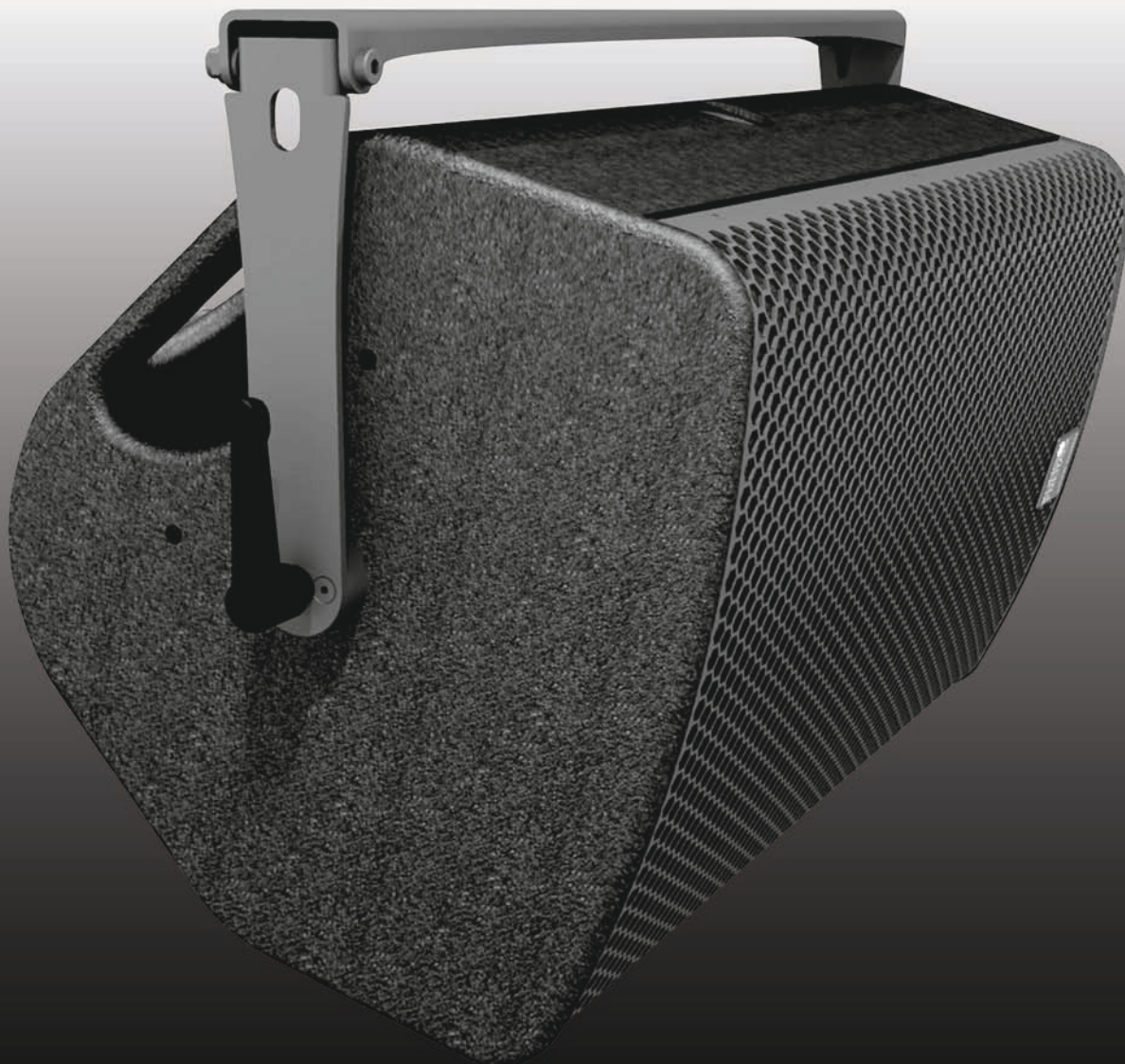


# Ceiling Bracket GRAVIS 8



## User's Manual

Translation of the original instructions

Version 1.3

Released: 19.01.2017



**Important Information,  
Please Read Before Use!**

KLING & FREITAG GmbH  
Wohlenbergstrasse 5  
D-30179 Hannover  
TEL +49 (0) 511 96 99 70  
FAX +49 (0) 511 67 37 94  
[www.kling-freitag.de](http://www.kling-freitag.de)





---

## Table of contents

<b>1</b>	<b>Introduction</b>	<b>4</b>
1.1	Icons Used	4
1.2	About these user's manual	4
<b>2</b>	<b>Product Description</b>	<b>5</b>
2.1	Intended Use	5
2.2	Items Included	5
2.3	Components	5
<b>3</b>	<b>Safety Instructions</b>	<b>6</b>
3.1	Mounting the Speakers / Wall and Ceiling Installation	6
3.2	Admissible load capacity	6
<b>4</b>	<b>Installation and Usage Instructions</b>	<b>7</b>
<b>5</b>	<b>Dimensions and Weight</b>	<b>8</b>
<b>6</b>	<b>EC Declaration of Conformity</b>	<b>9</b>
<b>7</b>	<b>Accessories</b>	<b>10</b>
<b>8</b>	<b>Care and Maintenance</b>	<b>11</b>
<b>9</b>	<b>Transportation and Storage</b>	<b>11</b>
<b>10</b>	<b>Disposal</b>	<b>11</b>

## 1. Introduction

Thank you for purchasing a KLING & FREITAG product. To guarantee trouble-free operation and enable the KLING & FREITAG GRAVIS 8 speaker system to achieve its full potential, please read these user's manual carefully before use. This item is a quality accessory for the GRAVIS 8 speaker system. Combining it with your existing speaker system creates an extremely versatile pro-grade tool that meets all requirements in terms of audio quality and safe installation.

### 1.1 Icons Used



Warning



Caution



Tip

This icon indicates a risk of injury or death. Not following these instructions may result in serious health problems including potentially fatal injuries.

This icon indicates a possibly dangerous situation. Not following these instructions may cause minor injuries or damage.

This icon marks instructions for proper use of the described products. Not following these instructions may cause malfunctions or damage.

This icon marks information provided for simplified use of the described products.

### 1.2 About these user's manual

© KLING & FREITAG GMBH. All rights reserved.

All specifications regarding the features of the described products and applicable safety guidelines provided in these user's manual are based on information available at the time of publishing.

We assume no responsibility for technical specifications, dimensions, weights, and properties.

All information in these user's manual is subject to change without notice.

**To ensure safe operation, all persons using the speaker accessories must have access to this guide and all other relevant material during installation. The speaker accessories must not be set up nor operated unless these user's manual has been read, understood and kept readily available on site.**

The original language of all KLING & FREITAG user's manuals is German.

If you need user manuals from KLING & FREITAG, you can order a replacement or download it from our [www.kling-freitag.de](http://www.kling-freitag.de).

Contact:

[info@kling-freitag.de](mailto:info@kling-freitag.de)

KLING & FREITAG GMBH, Wohlenbergstr. 5, D-30179 Hannover  
Telefon +49 (0) 511 96 99 70, Telefax +49 (0) 511 67 37 94

## 2. Product Description

### 2.1 Intended Use



Warning

The Mounting Bracket GRAVIS 8 is solely for commercial use and may only be used with the loudspeaker GRAVIS 8 in the manner described here.

The Mounting Bracket GRAVIS 8 may not be used to lift and secure people or objects other than the above-mentioned speaker systems.

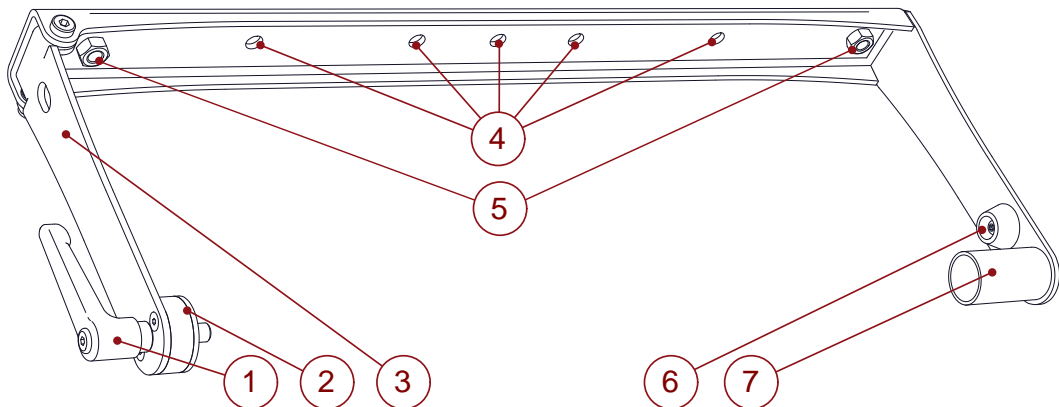
The Mounting Bracket GRAVIS 8 is protected from temporary climatic conditions. For long-term use, however, it is designed to be used indoors only.

When used with the TV spigot 20 mm and the TV hook clamp, the Mounting Bracket GRAVIS 8 can be mounted on trusses or pipes with a diameter of 30 – 50 mm.

### 2.2 Items Included

- Ceiling Bracket GRAVIS 8 with captive metal clamp lever
- (1x) User's Manual

### 2.3 Components



1. Clamp lever
2. Rubber washer
3. Swivel arm
4. Drill hole Ø 10.5 mm
5. Thread M10 to fixate the swivel arm during transport
6. Rubber spacer
7. Flange mounting

### 3. Safety Instructions

#### 3.1 Mounting the Speakers / Wall and Ceiling Installation



**Warning**

Suspended loads pose a safety risk.

Only qualified technicians are permitted to perform the installation steps. Be sure to use personal protective equipment at all times.

The technicians installing the speaker on site are responsible for and guarantee safe setup and use.

Never use signal cables or power cords for suspending, aligning, or securing the systems.

Before installing, check the stability, strength, and materials of walls, ceilings, and boarding. For example, use suitable rawlplugs for wall panels and make sure the strength is sufficient.

Note that the suspension points on the hall ceiling (i.e. shackles, attachment points, or chain hoists) must comply with the DGUV regulations 17 and 18 or similar locally applicable accident-control standards. The maximum load must have been certified by an authorized expert.

Be sure to tighten all bolts and screws to the specified torque.

Unless otherwise stated, use only KLING & FREITAG original parts for mounting the speakers. Never use other parts (in particular, parts not made by KLING & FREITAG).

Make sure all fittings used are suitable for the task at hand and meet all relevant safety requirements.

Ensure that all connections are secured against coming loose and that only authorized, statically tested and correctly sized supports, mounting equipment, wire ropes and chains are used.

Be sure to always visually inspect all safety-related speaker and accessory components before use. If there are signs of wear, cracks, or deformation, etc., replace the affected parts immediately. Visual inspection also includes checking all screwed connections of supporting components.

The information described here does not relieve the user of the duty to follow the given safety requirements and legal regulations.

#### 3.2 Admissible load capacity



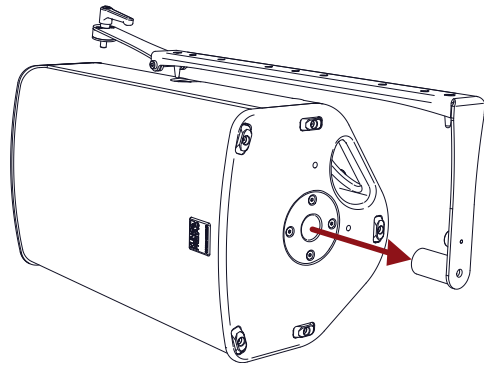
**Warning**

The speaker accessory Mounting Bracket GRAVIS 8 may only be loaded with one speaker model GRAVIS 8.

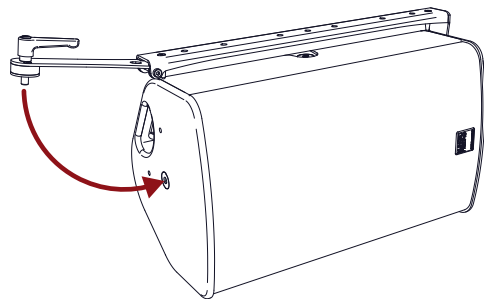
The speaker accessories may only be mounted horizontally.

## 4. Installation and Usage Instructions

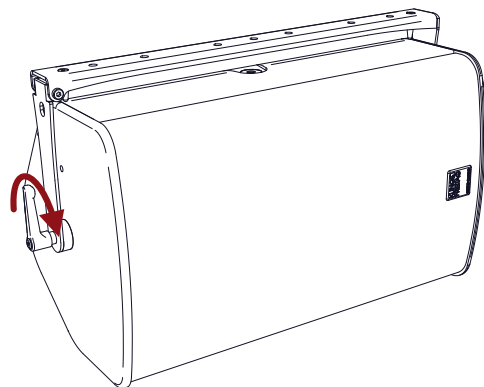
Place speaker's flange onto the flange adapter of the speaker mount.



Move the swivel arm down so that the M10 thread of the clamp lever is over the speaker's flying point.

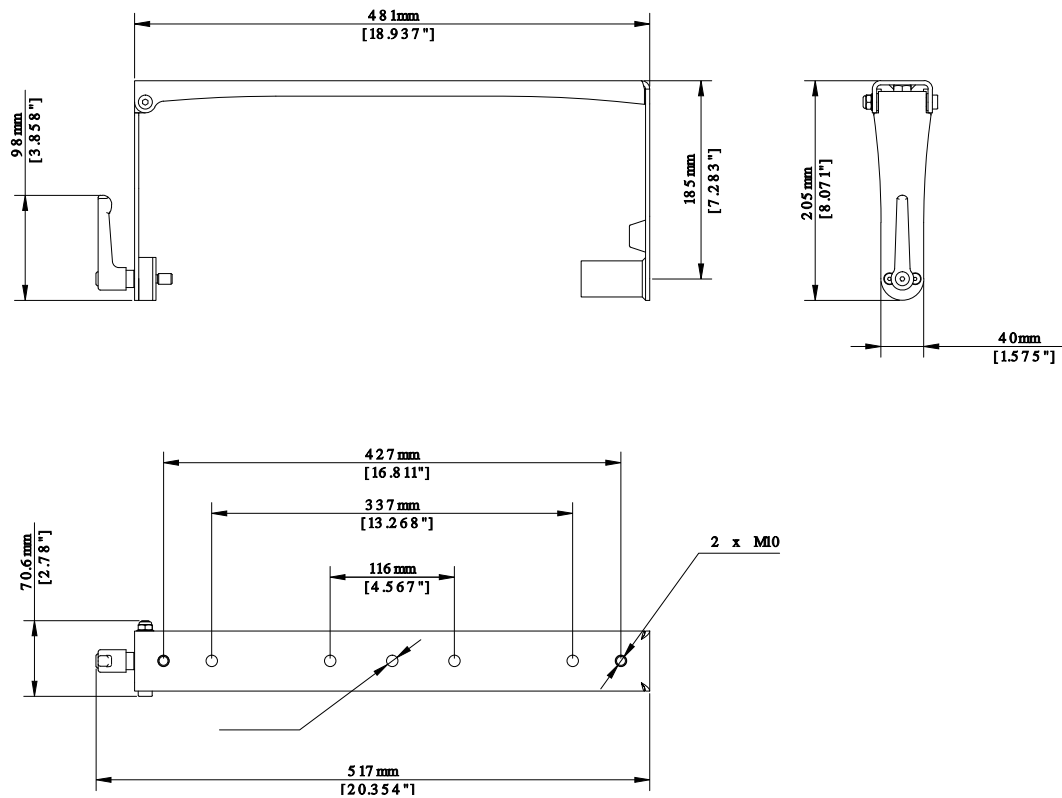


Turn the M10 thread of the clamp lever into the thread of the flying point. Before tightening the clamp lever, align the speaker as desired.  
Tighten the clamp lever!



## 5. Dimensions and Weight

Self-weight: 2.2 kg





## 6. EC Declaration of Conformity

according to EC Machinery Directive 2006/42/EG

We:

**KLING & FREITAG GmbH**  
**Junkersstr. 14**  
**30179 Hanover**  
**Germany**

hereby declare under our own responsibility that the following product(s):

**Type:**

Mechanical speaker accessory

**Model(s):**

Ceiling Bracket GRAVIS 8

complies with the requirements of the EC health and safety directives.

The following standards have been applied:

- DIN EN ISO 12 100
- DIN EN 18 800
- BGV C1



Hannover, January 5, 2016

Jürgen Freitag (CEO)

## 7. Accessories

M10 x 17 Eyebolt



Pipe Clamp for TV Spigot



TV spigot 20 mm



**Warning**

## 8. Care and Maintenance

1. For the owner and user, it is mandatory to be aware that speaker accessories used to fly or mount the speakers are fundamentally safety-relevant.

Note that the mains cables are delivered with varying connector options or with open wires (mains side), depending on the country or order number.

The accessory Mounting Bracket GRAVIS 8 can exhibit signs of wear over the years, i.e. from mechanical strain, transport damage, corrosion, or improper handling.

As a basic principle, you must visually inspect the speaker accessory Mounting Bracket GRAVIS 8 before and after you use it. For fixed installations, you must inspect it for signs of wear at regular intervals.

When performing those checks, particularly look for deformations, cracks, dents, damage to threads, and corrosion. Also check slings and lifts (e.g. shackles, chains, and steel ropes) carefully for wear and deformation.

If as a result of these checks any uncertainty should arise with regard to safety or if specific faults are found, the Mounting Bracket GRAVIS 8 system may no longer be used and you must send in the product to KLING & FREITAG GmbH for inspection and repairs, if necessary. If defects are ascertained, then you must send in the product to KLING & FREITAG GmbH for inspection and repairs, if necessary.

**Inspection regulations may vary depending on application and country of use. Observe all applicable regulations; when in doubt, contact the local authorities.**

Many countries require regular inspection of mounting components and accessories. An additional annual inspection is typically required to be performed by a technical expert. Moreover, a legally certified or official authority must perform a detailed inspection every four years.

Therefore, be sure to maintain an inspection log. Enter the values determined for each speaker and accessory during the periodic checks into this log. This way, relevant data are always at hand in case of inspection. The log should also document maintenance measures and inspection intervals and contain parts lists.

2. Clean this speaker accessory regularly using a corrosion-prevention penetrating oil (for example, WD-40®).

## 9. Transportation and Storage

This speaker accessory is protected against short term moisture. GRAVIS 8Store, transport, and use the accessories in dry environments only. This speaker accessory is not designed for long-term use in a corrosive environment.

Make sure that the system is adequately ventilated during longer storage periods so any residual moisture can escape from the equipment.

Furthermore, you have to ensure that the accessory is protected from mechanical strain to prevent possible damage. GRAVIS 8

## 10. Disposal

Dispose of this product in compliance with your national regulations.

Ensure that after being disposed of that this product cannot be used again or in any other way.

## INDEX

• Accessories.....	10
• Care.....	11
• Components.....	5
• Dimensions.....	8
• Disposal.....	11
• EC Declaration of Conformity.....	9
• Intended Use.....	5
• Items Included.....	5
• Maintenance.....	11
• Mounting.....	7
• Product Description.....	5
• Safety Instructions.....	6
• Storage.....	11
• Transportation.....	11
• Weight.....	8